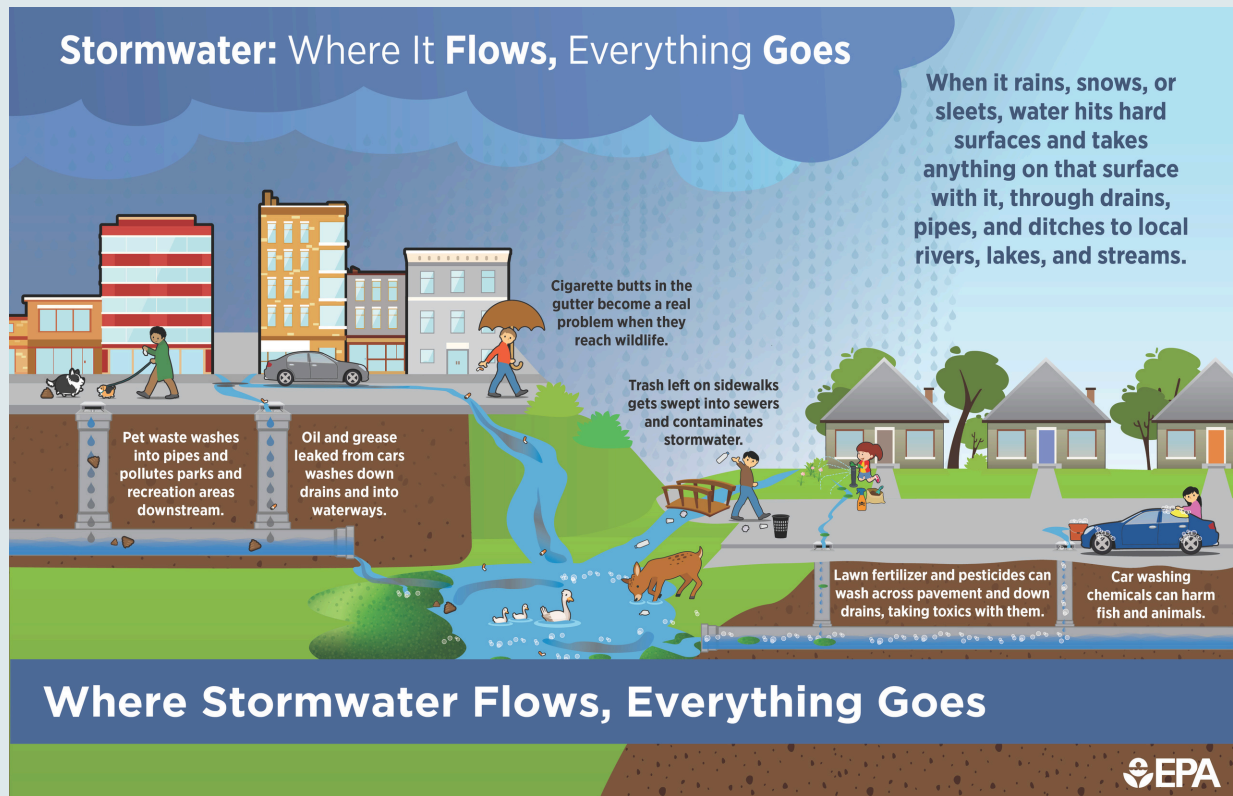


Stormwater



The rainy season is just around the corner in our beautiful Willamette Valley! Stormwater comes from rain or melting snow and flows over roads, rooftops, and fields. Managing stormwater is essential to prevent flooding, protect our waterways, and keep our ecosystems healthy.

As stormwater runs off hard surfaces, it can collect pollutants like oils, chemicals, and trash. These can end up in our rivers and streams, affecting the places where we fish and play, and harming local wildlife and water quality. Together, we can create a healthier, cleaner environment by following some simple best practices :

- Keep your gutters clear.**
- Use fewer fertilizers and pesticides.**
- Direct car wash and pressure washer runoff away from paved surfaces.**
- Keep soil and landscaping materials out of streets and storm drains.**
- Clean up pet waste.**

Want to learn more about stormwater management? Check out resources from the EPA and our city website to see how you can contribute to a sustainable future!